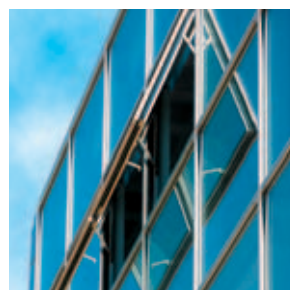
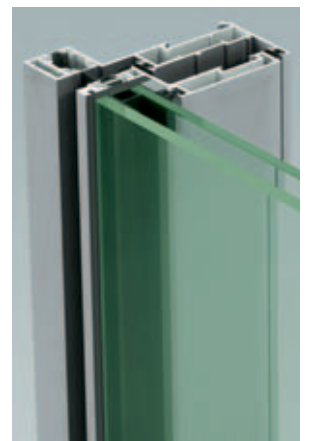
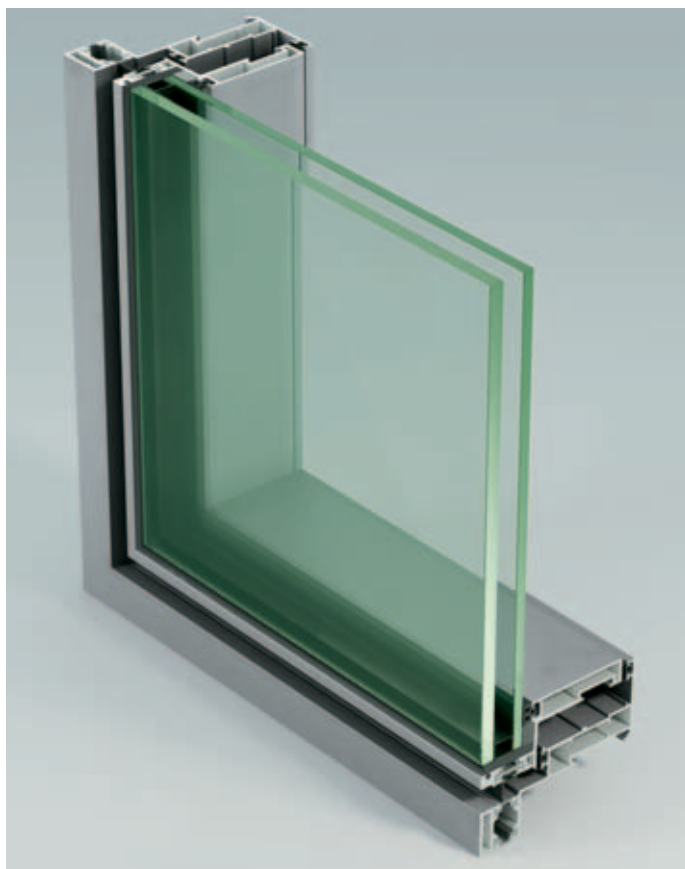


NC 96 CW

Architectural Envelope Windows System for Curtain Wall





Features

- 6063-T5 Aluminum Alloy Frame
- Frame Depth 96 mm [$3\frac{3}{4}$ "]
- Glass Size 25.4 mm [1"]
- Awning-type max Sash Weight: 180 Kg [396 lbs]
- Weather Stripping: EPDM Gaskets
- Thermal Barrier: Polyamide
- Heavy Duty Hinges
- Multi-Point Lock System
- Rotary Operator Mechanism
- Mitered Corners with Heavy Duty Keys
- Custom Color
- Painted or Anodized Finish
- Dual Finish Available
- Durable Components

Benefits

- Acoustic Insulation
- Thermal insulation
- Quiet and Smooth Closing System
- Easy Maintenance

Applications

- Awning Window for Curtain Wall
- Casement Window for Curtain Wall

Opening Solutions

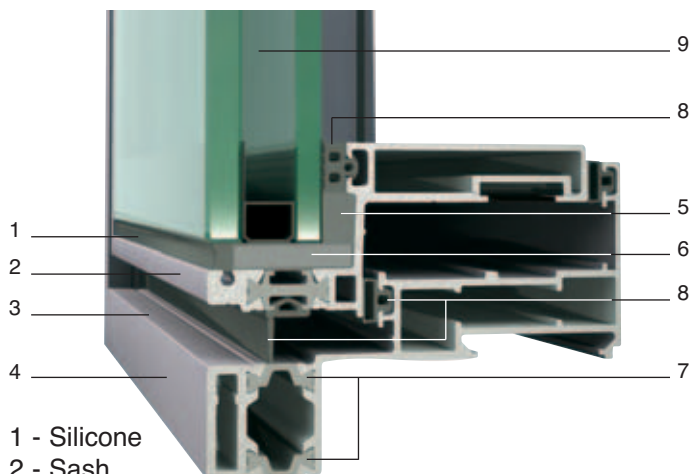


Awning window

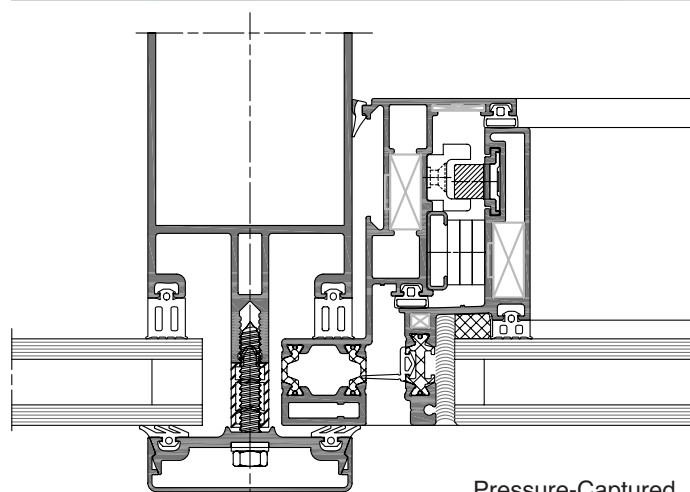


Casement window

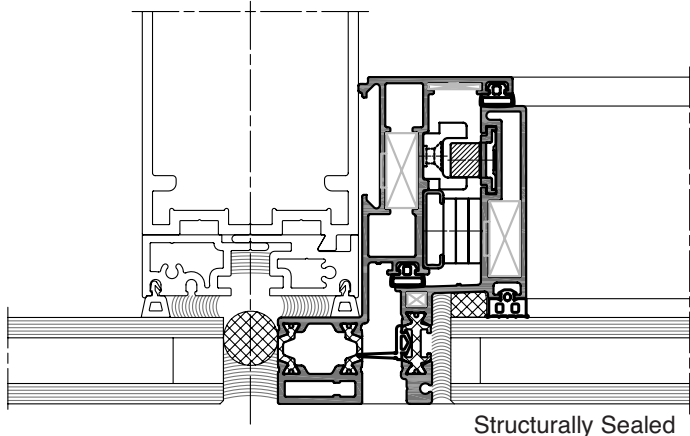
Technology



- 1 - Silicone
- 2 - Sash
- 3 - Frame
- 4 - Painted or Anodized Finish
- 5 - Structural Silicone
- 6 - Setting Block
- 7 - Polyamidic Thermal Barrier
- 8 - EPDM Gasket
- 9 - Insulating Glass Unit




Pressure-Captured



Structurally Sealed

Architectural Envelope Windows System for Curtain Wall

Performance data

Tested Configuration	C GRADE SPECIMEN SIZE	AW GRADE SPECIMEN SIZE	AAMA / WDMA / CSA 101 / I.S.2 / A440-05	
 Awning window	AP - C 80	AP - AW 80	Air infiltration: cfm/ft ² Q average	
	NC 70054 C GRADE SASH	NC 70037 AW GRADE SASH	Level: A3	Q _{average} : 0.14 L/s.m ² [0.027 ft ³ /min-ft ²] @ 300 Pa
	1500 x 2400 mm [59" x 94.5"]	1622 x 2522 mm [64" x 99"]	Water penetration: ASTM E331 - E547	
			DP 100: 720 Pa [15 psf]	
			Structural:	
			DP 80: 5745 Pa [120 psf]	

Traditional Rotary-Type Operator Mechanism



New Multipoint-lock Bi-directional Mechanism



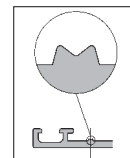
Handles



Tokyo line : 7mm [1/4"] square shaft handles

Quality

METRA stands for quality and optimal performance.
Only original METRA profiles and accessories can certify the highest performance.
Original METRA products have an "M" mark on the interior surface.



METRA quality is certified by ISO 9001.
METRA controls the entire process of production for the extrusions.
Manufacturing and installation of final products are performed through a network of independent specialists.





METRA Systems
1995 Industrial Blvd. - Laval, QC H7S 1P6, Canada
Tel. +1 450 629 4260 - Fax +1 450 629 7313
info@metrasystem.com
www.metrasystem.com



METRA
METRA S.p.A.
Via Stacca, 1 - 25050 Rodengo Saiano (BS) Italy
Tel. +39 030 6819.1 - Fax +39 030 6819 990
metra@metra.it
www.metra.eu

METRA prints on ecologically friendly paper
and uses printing products with low
environmental impact.



METRA Products

Architectural Envelope

Entrances & Windows

Special Systems

Sliding Systems

Accessories

Printed in September 2009